

PAAC LP-FM Radio Station Project

Bring Voice to the West Side

Why Community Radio

- **Community radio is...**
- **Transformative.** Community radio stations have organized workers to win better wages, cleaned up toxic waste, and registered voters.
- **Accessible.** 90% of Americans listen to radio at least once a week. Radio can reach those who don't speak English or don't have Internet.
- **Affordable.** For listeners, broadcast radio is free, and for producers, community radio is much less expensive than commercial media.
- **Local.** Community radio strengthens community ties and builds civic engagement. Community radio covers news and events that don't get enough airtime at bigger outlets, such as local elections, school board meetings, and neighborhood arts festivals.
- **Participatory.** Community members participate in the programming and governance of a community radio station, ensuring that the station is relevant and meets local needs.

2014 PAAC FCC Application

- October 15, 2104 PAAC Granted Construction Permit
- Location : Charleston WV : West Side
- Frequency (MHz): 92.1
- Channel : 221
- Class LP100
- Hours of Operation: Unlimited
- **Note: Station must be on air on or before April 15, 2015*******

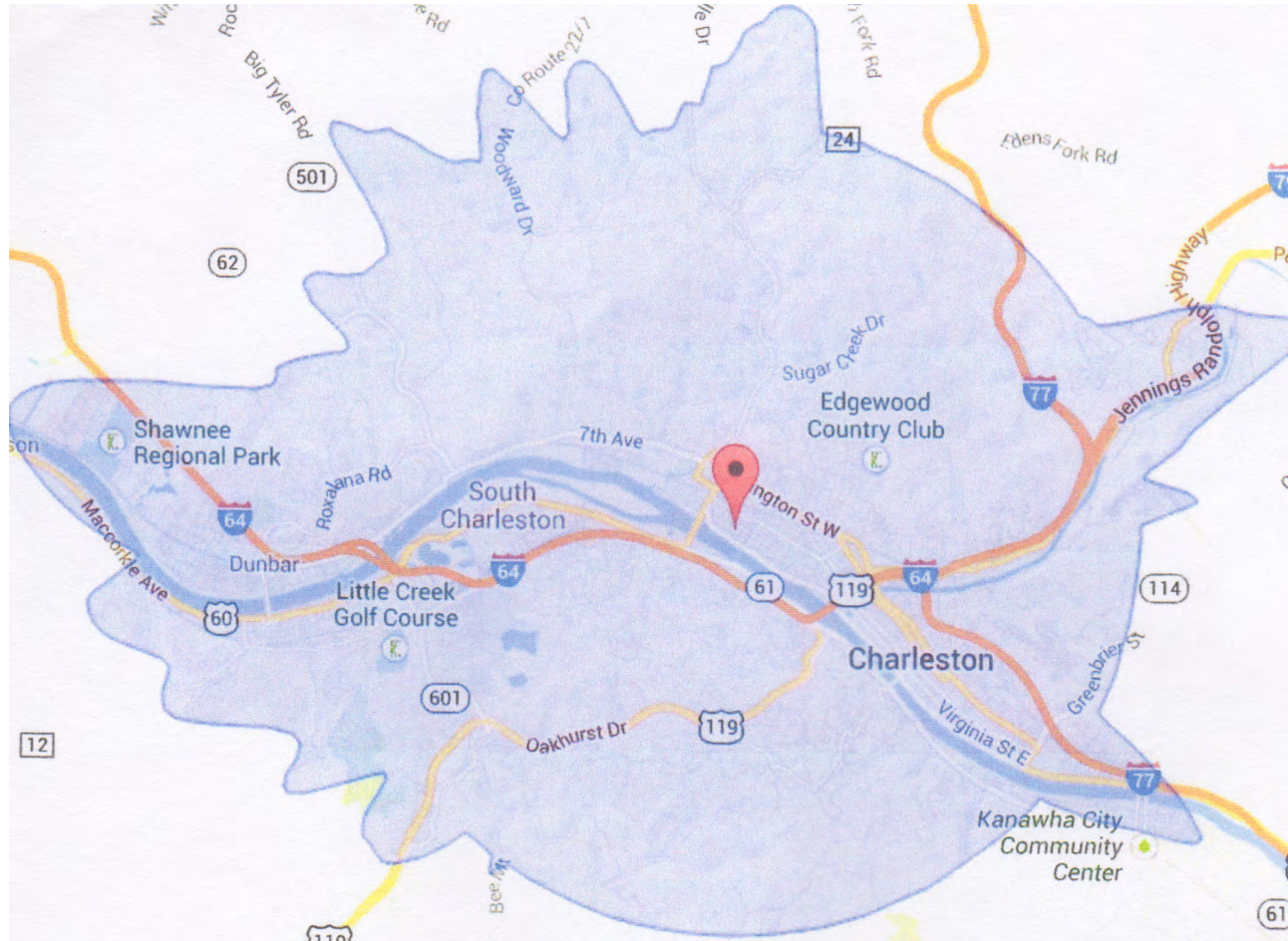
Call Letters

- WSPI-LP Charleston's West Side Positive Influence.
- 92.1 Lower Power FM

Mission

- **The Mission of WSPI-LP (West Side's Positive Influence) is to act as an agent of empowerment by providing a platform for Music, Information, Community Education and Advocacy to improve positive outcomes for all.**

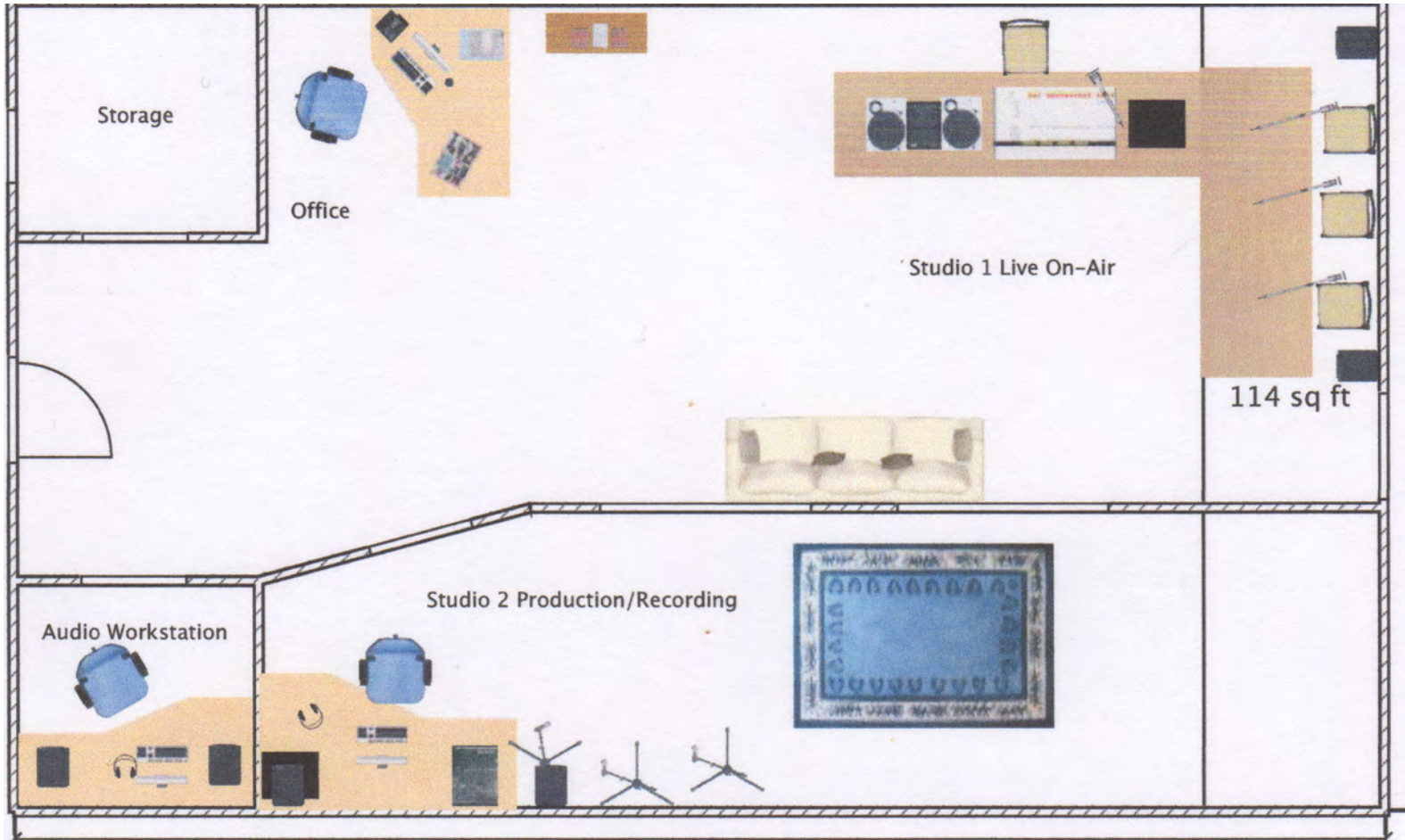
Coverage



Location



Station Layout



Station Layout



Station Budget

Donors

Donors

Donors

Expected Programming

- Educational (Local Organizations)
- Music (Positive Influence)
- Local News
- Gospel Sunday
- Advocacy Programming
- National News
- Recovery Radio
- Local Youth Personality Radio Shows
- Community Requested Radio****